

## DE\_Hallgatói\_angol\_Faculty of Science and Technology

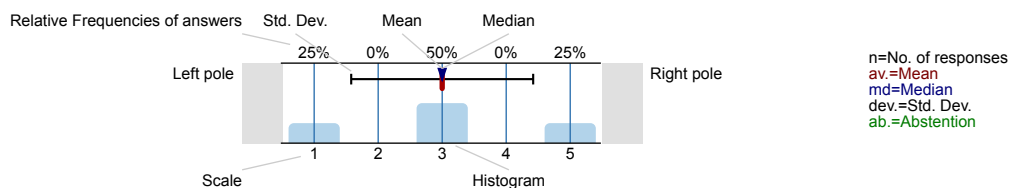
No. of responses = 89



## Survey Results

## Legend

Question text



## 1. General Questions

1.1) Sex:



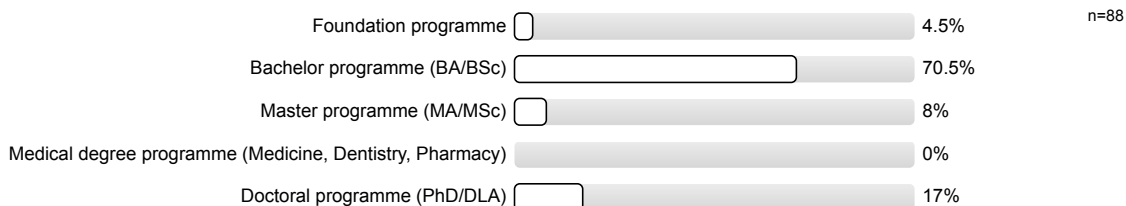
1.2) Which faculty of UD are you studying at? (If you do more than one training programmes simultaneously, choose the one you find the most important.)



1.3) What is the professional field of your chosen major?



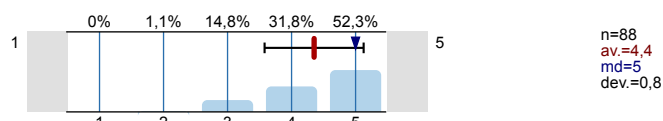
1.4) What is the level of your training programme?



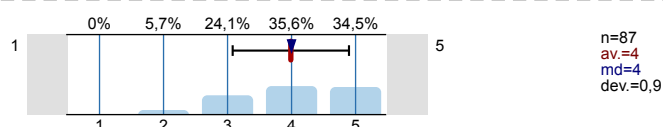
## 2. Importance of work-related competencies

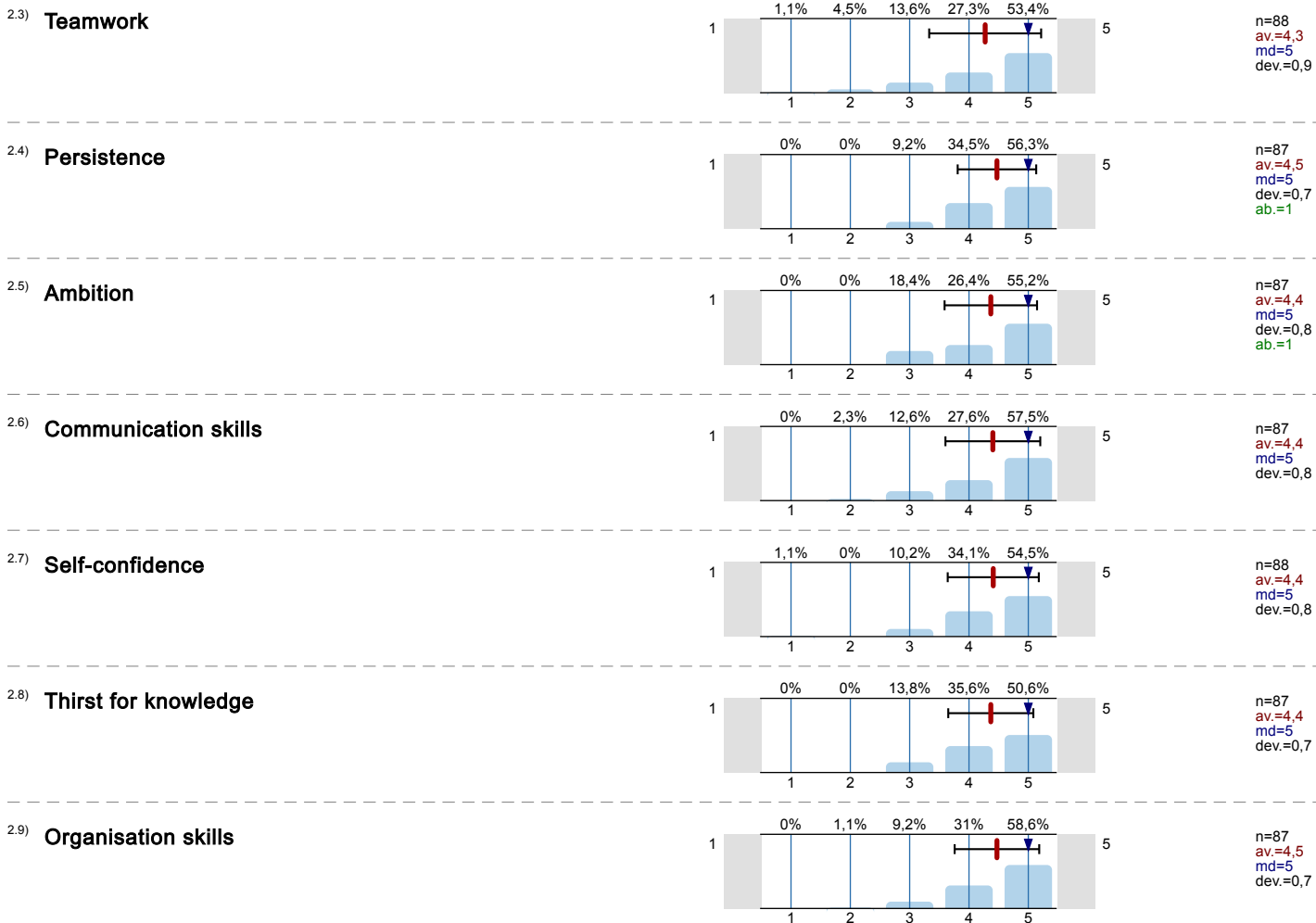
Please rate how important you think the following competencies are. (1=not important at all; 2= not important; 3=somewhat important; 4=important; 5 = very important; 0= no opinion)

2.1) Proactive problem solving skills



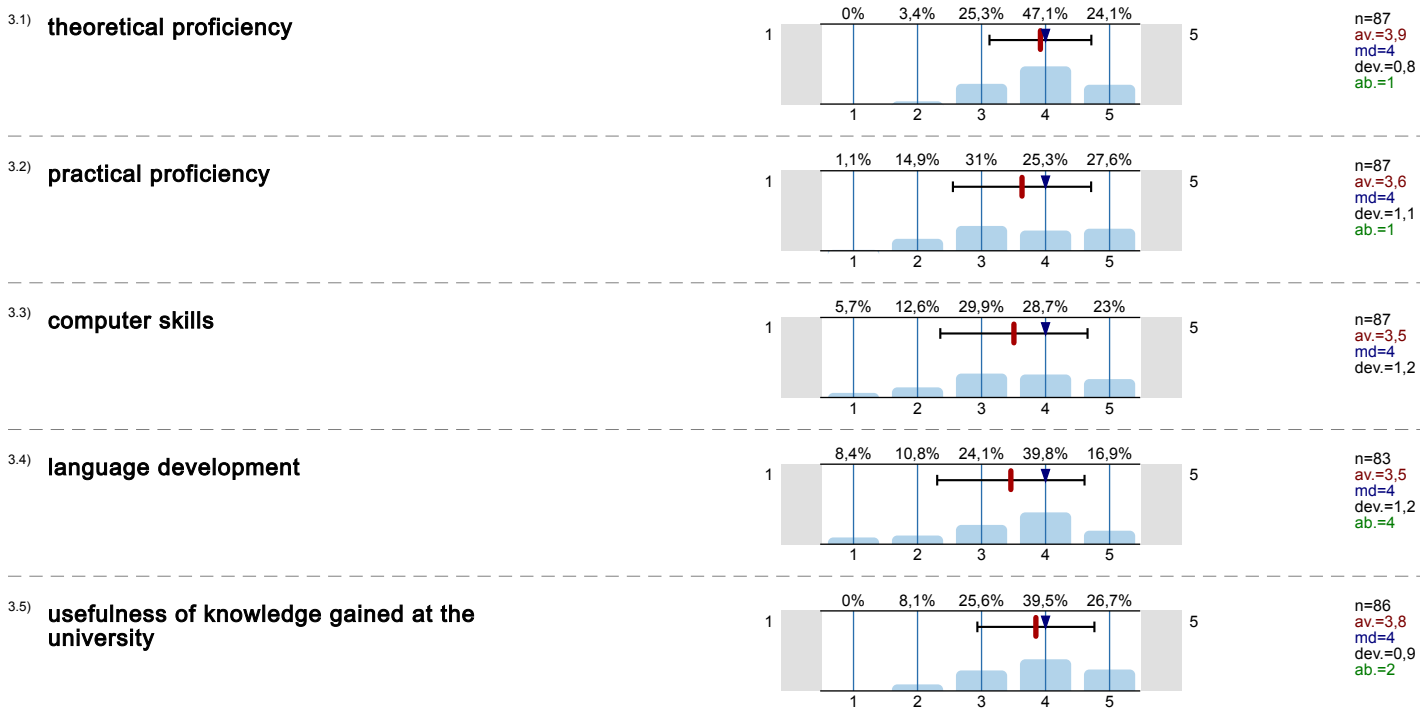
2.2) Aiming for perfection



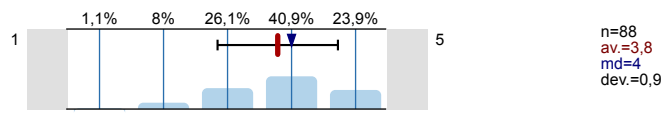


**3. Satisfaction with the development of skills and knowledge**

Please rate how satisfied you are with education and the development of the following skills and knowledge at your faculty. (1= not satisfied at all; 2=not satisfied; 3=somewhat satisfied; 4=satisfied; 5 = absolutely satisfied; 0=no opinion)



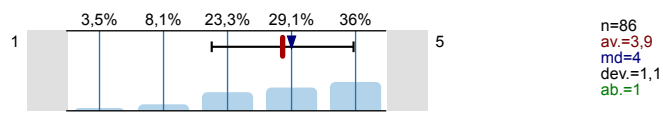
3.6) (overall) quality of education



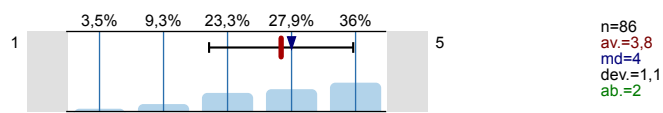
#### 4. Infrastructure

Please rate how satisfied you are with the following things. (1= not satisfied at all; 2=not satisfied; 3=somewhat satisfied; 4=rather satisfied; 5 = absolutely satisfied; 0=no opinion)

4.1) equipment and facilities of education



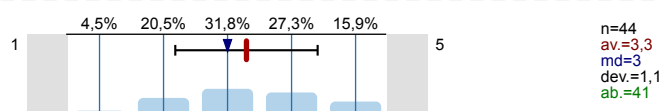
4.2) appearance and physical conditions of buildings



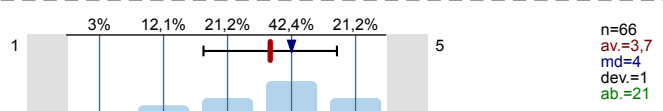
#### 5. Services

Please rate how satisfied you are with the following services. (1= not satisfied at all; 2=not satisfied; 3=somewhat satisfied; 4=rather satisfied; 5 = absolutely satisfied; 0=no opinion)

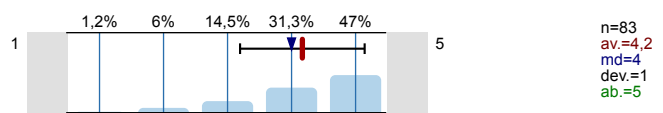
5.1) Dorm-related services



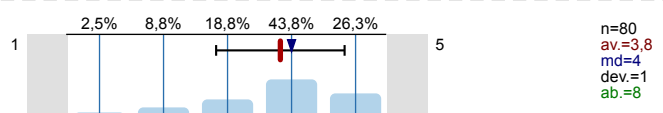
5.2) Sports-related services



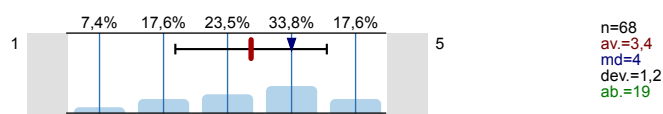
5.3) Student Service Centre/ Education Office/ International Office/Coordinating Centre for International Education



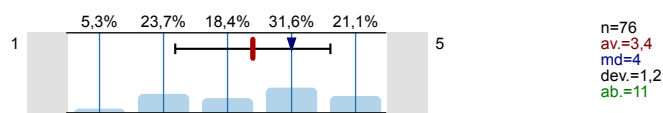
5.4) Department/Institute Administration



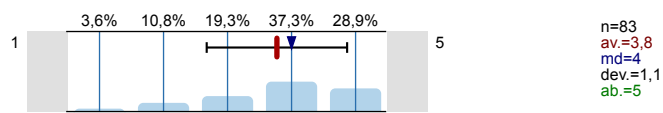
5.5) Not education-related consultancy



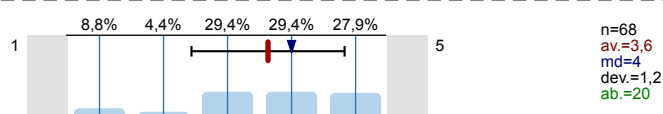
5.6) Getting to know how the faculties work

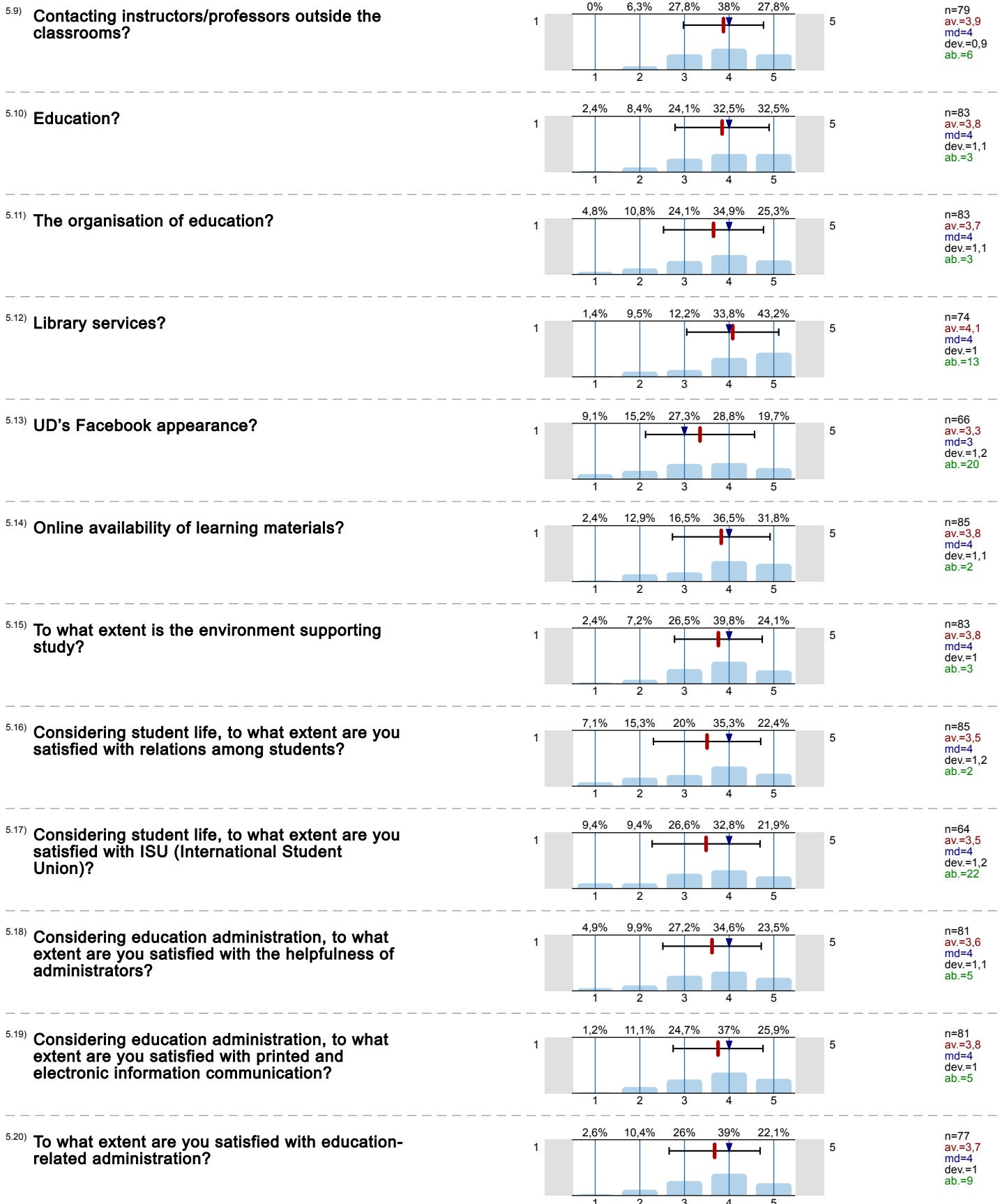


5.7) Your faculty



5.8) Sports facilities?

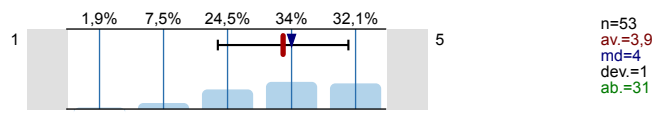




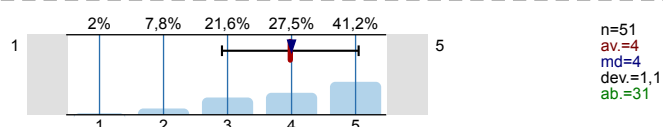
## 6. Professional Practice

How would you rate the following statements related to your professional practice (if there is any):

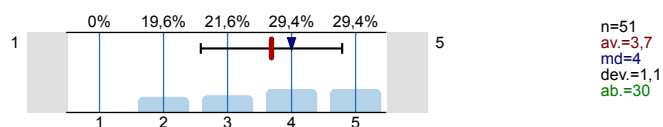
6.1) I have learned many new things during my professional practice.



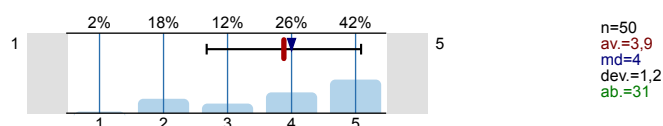
6.2) I would love to work at the place where I did my professional practice.



6.3) I have gained real work experience during my professional practice.



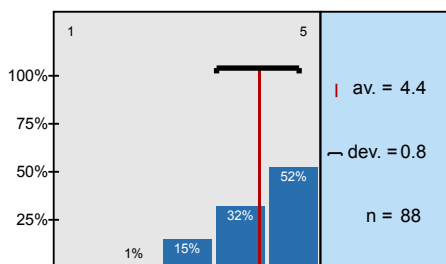
6.4) My instructors/professors helped me a lot during my professional practice.



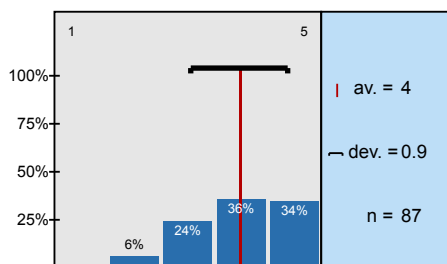
Thank you for completing our survey! You can submit your answers by clicking on "Send." Saving your data may take a few seconds depending on Internet speed. Please wait for the message verifying that your data is saved.

# Histogram for scaled questions

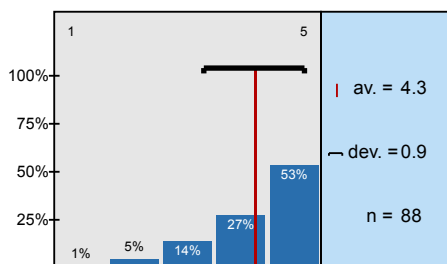
**Proactive problem solving skills**



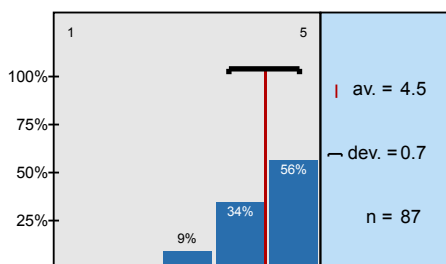
**Aiming for perfection**



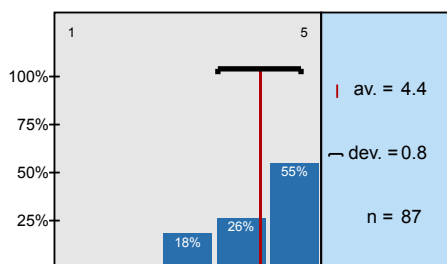
**Teamwork**



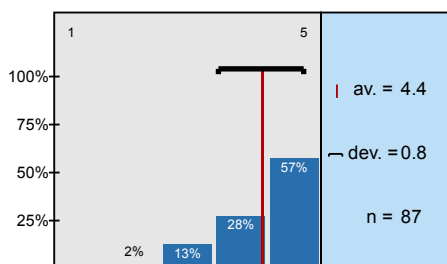
**Persistence**



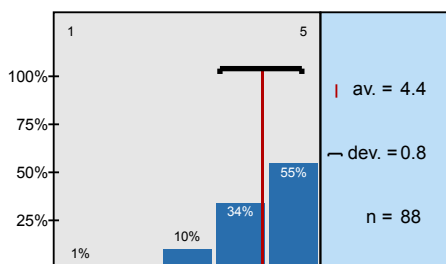
**Ambition**



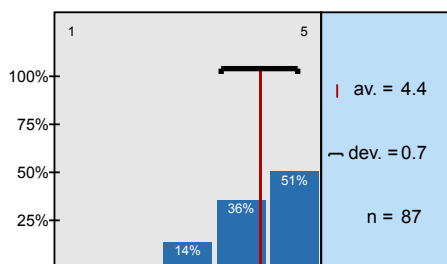
**Communication skills**



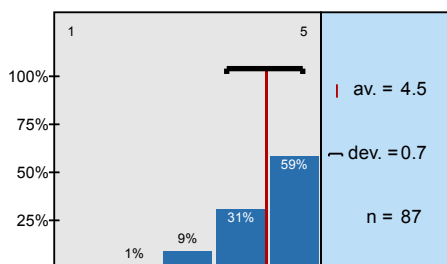
**Self-confidence**



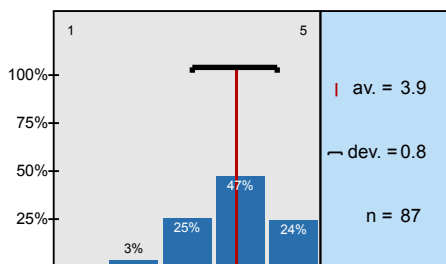
**Thirst for knowledge**



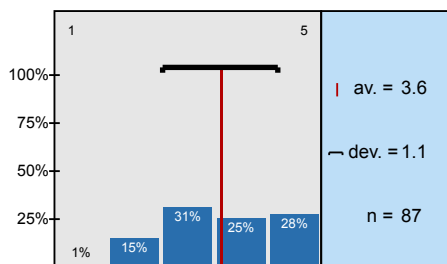
**Organisation skills**



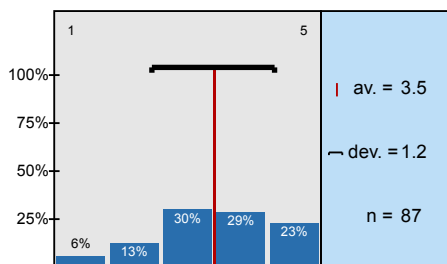
**theoretical proficiency**



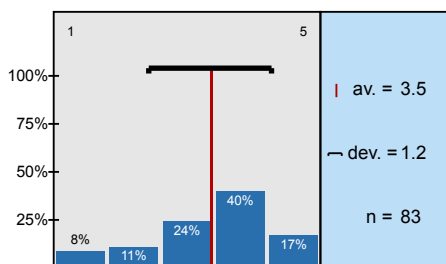
**practical proficiency**



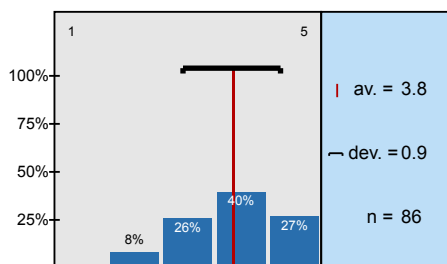
**computer skills**



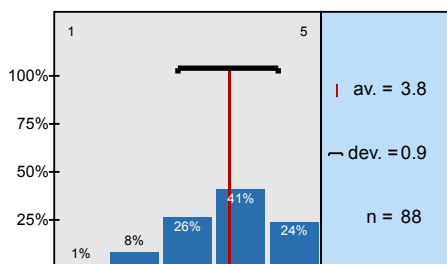
**language development**



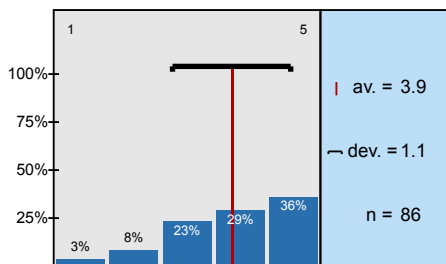
**usefulness of knowledge gained at the university**



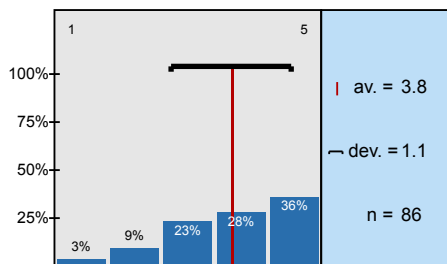
**(overall) quality of education**



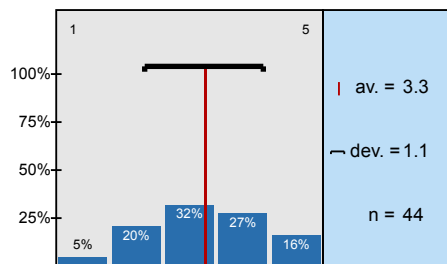
**equipment and facilities of education**



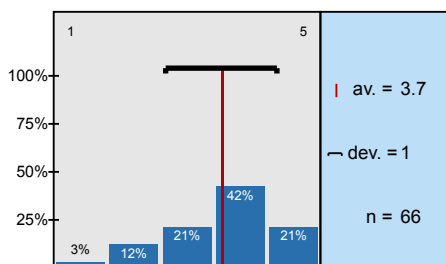
**appearance and physical conditions of buildings**



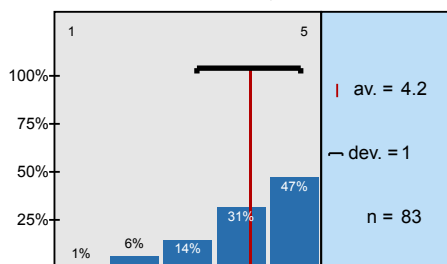
**Dorm-related services**



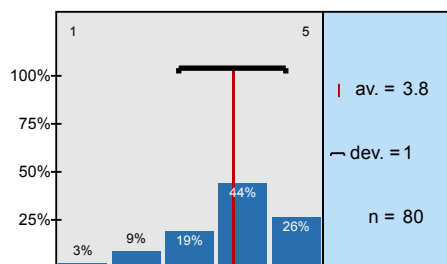
**Sports-related services**



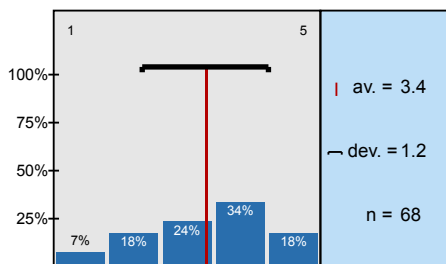
**Student Service Centre/ Education Office/ International Office/Coordinating Centre for**



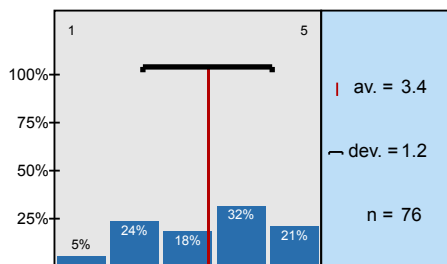
**Department/Institute Administration**



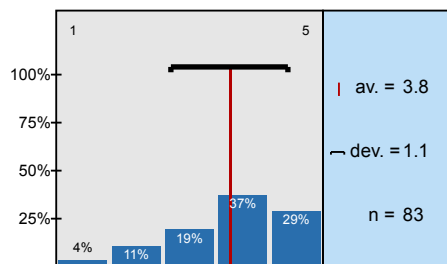
**Not education-related consultancy**



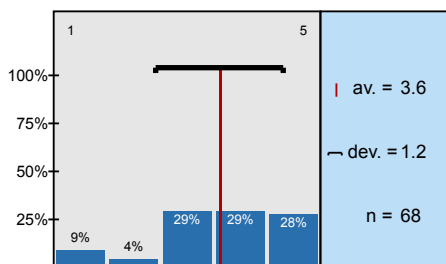
**Getting to know how the faculties work**



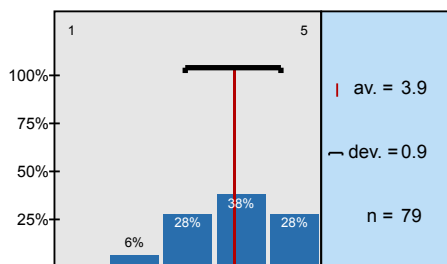
**Your faculty**



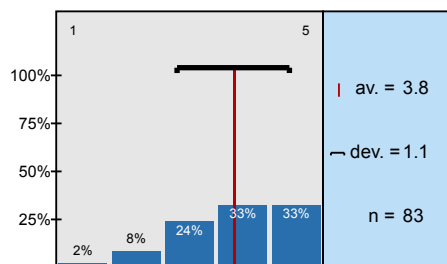
**Sports facilities?**



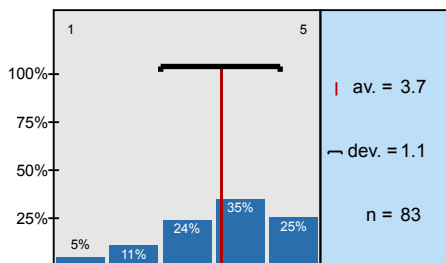
**Contacting instructors/professors outside the classrooms?**



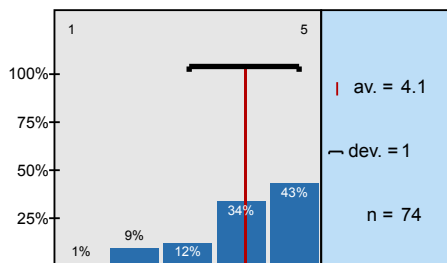
**Education?**



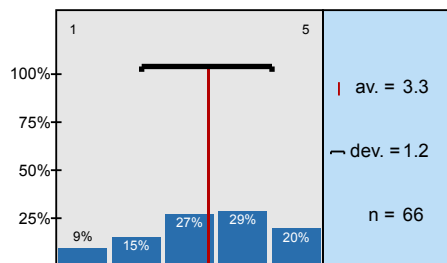
**The organisation of education?**



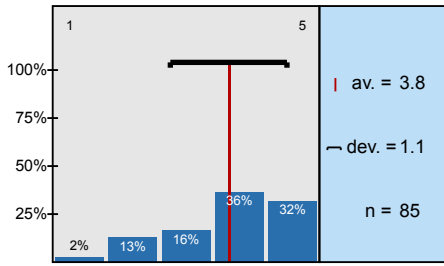
**Library services?**



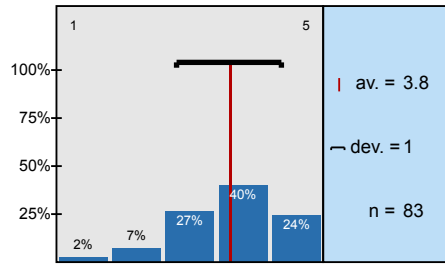
**UD's Facebook appearance?**



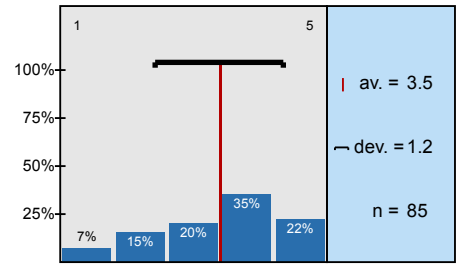
**Online availability of learning materials?**



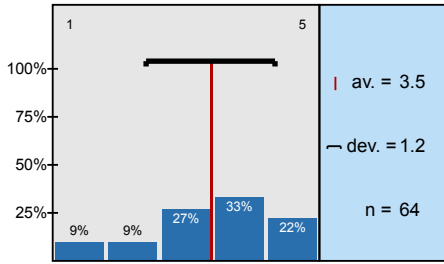
**To what extent is the environment supporting study?**



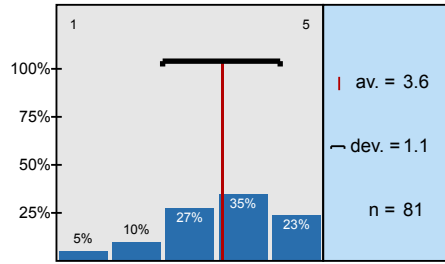
**Considering student life, to what extent are you satisfied with relations among students?**



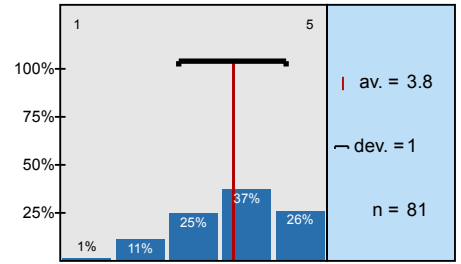
**Considering student life, to what extent are you satisfied with ISU (International Student Union)?**



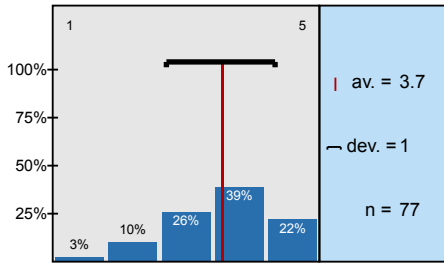
**Considering education administration, to what extent are you satisfied with the helpfulness of**



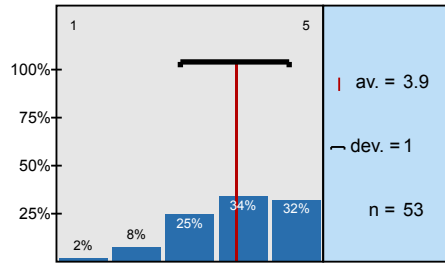
**Considering education administration, to what extent are you satisfied with printed and electronic**



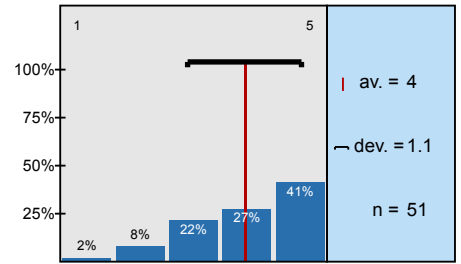
**To what extent are you satisfied with education-related administration?**



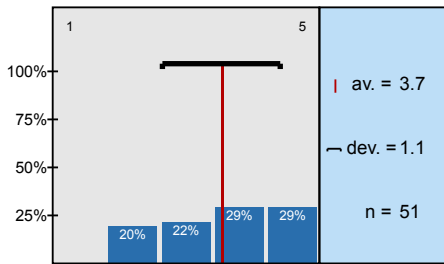
**I have learned many new things during my professional practice.**



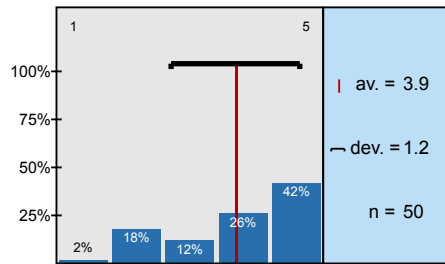
**I would love to work at the place where I did my professional practice.**



**I have gained real work experience during my professional practice.**



**My instructors/professors helped me a lot during my professional practice.**

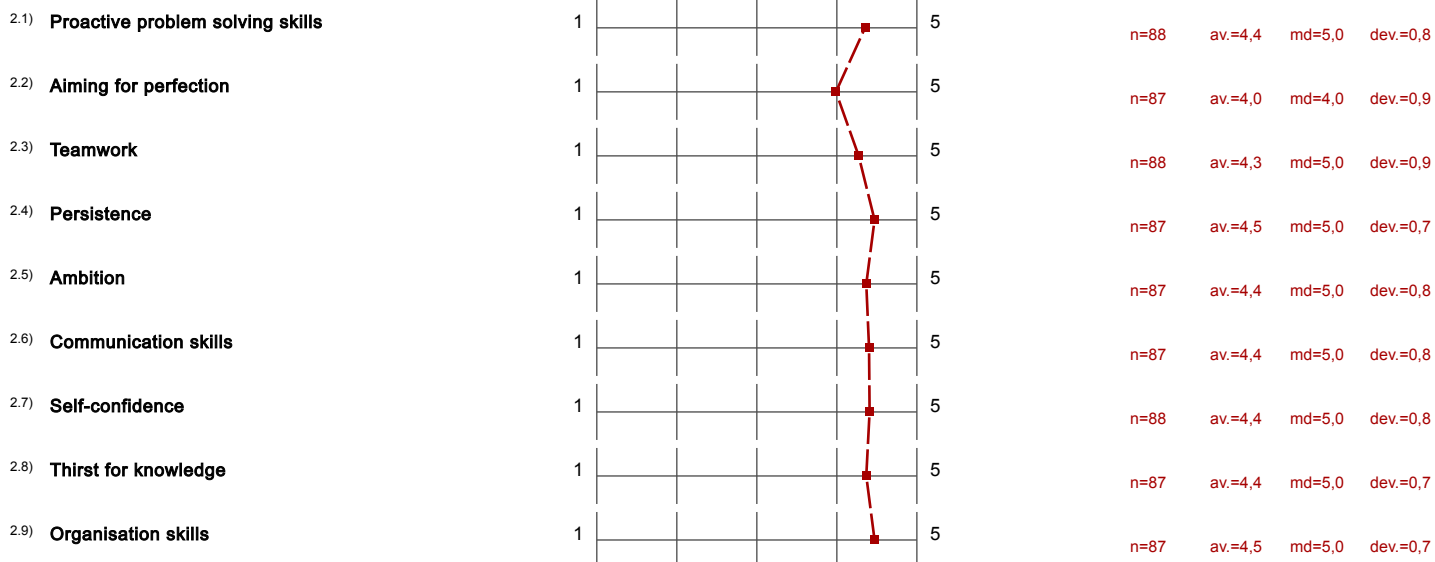


# Profile

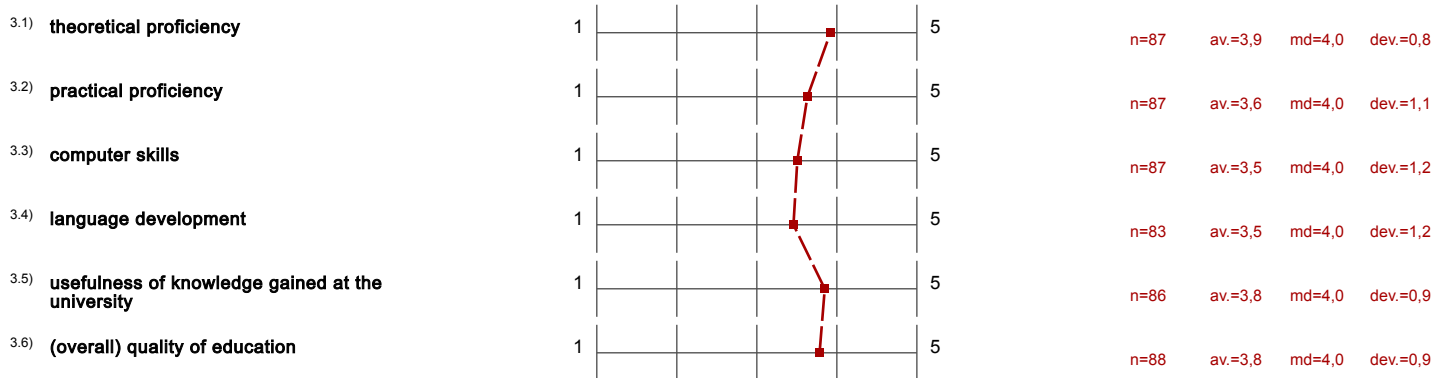
Subgroup: DE\_Hallgatói\_angol\_Faculty of Science and Technology

Values used in the profile line: Mean

## 2. Importance of work-related competencies



## 3. Satisfaction with the development of skills and knowledge






















## 4. Infrastructure







## 5. Services



5.2) Sports-related services	1		5	n=66	av.=3,7	md=4,0	dev.=1,0
5.3) Student Service Centre/ Education Office/ International Office/Coordinating Centre for International Education	1		5	n=83	av.=4,2	md=4,0	dev.=1,0
5.4) Department/Institute Administration	1		5	n=80	av.=3,8	md=4,0	dev.=1,0
5.5) Not education-related consultancy	1		5	n=68	av.=3,4	md=4,0	dev.=1,2
5.6) Getting to know how the faculties work	1		5	n=76	av.=3,4	md=4,0	dev.=1,2
5.7) Your faculty	1		5	n=83	av.=3,8	md=4,0	dev.=1,1
5.8) Sports facilities?	1		5	n=68	av.=3,6	md=4,0	dev.=1,2
5.9) Contacting instructors/professors outside the classrooms?	1		5	n=79	av.=3,9	md=4,0	dev.=0,9
5.10) Education?	1		5	n=83	av.=3,8	md=4,0	dev.=1,1
5.11) The organisation of education?	1		5	n=83	av.=3,7	md=4,0	dev.=1,1
5.12) Library services?	1		5	n=74	av.=4,1	md=4,0	dev.=1,0
5.13) UD's Facebook appearance?	1		5	n=66	av.=3,3	md=3,0	dev.=1,2
5.14) Online availability of learning materials?	1		5	n=85	av.=3,8	md=4,0	dev.=1,1
5.15) To what extent is the environment supporting study?	1		5	n=83	av.=3,8	md=4,0	dev.=1,0
5.16) Considering student life, to what extent are you satisfied with relations among students?	1		5	n=85	av.=3,5	md=4,0	dev.=1,2
5.17) Considering student life, to what extent are you satisfied with ISU (International Student Union)?	1		5	n=64	av.=3,5	md=4,0	dev.=1,2
5.18) Considering education administration, to what extent are you satisfied with the helpfulness of administrators?	1		5	n=81	av.=3,6	md=4,0	dev.=1,1
5.19) Considering education administration, to what extent are you satisfied with printed and electronic information communication?	1		5	n=81	av.=3,8	md=4,0	dev.=1,0
5.20) To what extent are you satisfied with education-related administration?	1		5	n=77	av.=3,7	md=4,0	dev.=1,0

## 6. Professional Practice

6.1) I have learned many new things during my professional practice.	1		5	n=53	av.=3,9	md=4,0	dev.=1,0
6.2) I would love to work at the place where I did my professional practice.	1		5	n=51	av.=4,0	md=4,0	dev.=1,1
6.3) I have gained real work experience during my professional practice.	1		5	n=51	av.=3,7	md=4,0	dev.=1,1
6.4) My instructors/professors helped me a lot during my professional practice.	1		5	n=50	av.=3,9	md=4,0	dev.=1,2